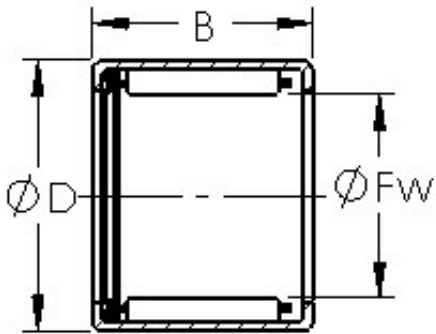




ISO BEARING-SINGAPORE (PTE)LTD.



AST SCE58P needle roller bearings

Bearing No. SCE58P

Bore Diameter	7,9502 mm
Outer Diameter	12,7 mm
Width	12,7 mm
Bearing Type	Cage Retained Rollers, Single Seal
Outer Dia (D)	0.5000
Width (B)	0.5000
Dynamic Load Rating (Cr)	1,060
Static Load Rating (Cor)	1,090
Max Speed (Grease) (X1000 RPM)	23,000
Shaft (Fw)	0.313
Weight (g)	6.00
Material - Drawn cup: Hardened carbon steel alloy, Rollers	52100 Chrome steel or equivalent

SCE58P Bearing 2D drawings and 3D CAD models