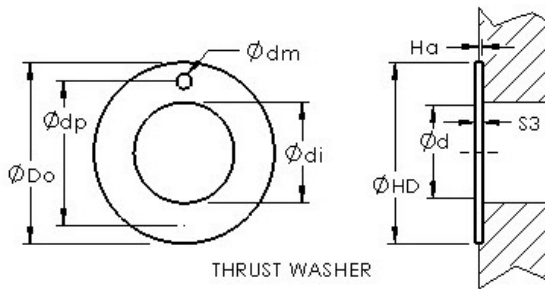




# ISO BEARING-SINGAPORE (PTE)LTD.



## AST ASTEPBW 2848-015 plain bearings

Bearing No. ASTEPBW 2848-015

Bore Diameter	26 mm
Outer Diameter	48 mm
Bearing Type	thrust washer
Shaft Dia., Nominal (d)	26.0000
Bearing Outside Diameter, Nominal (Do)	48.000
Washer Inside Diameter, Nominal (di)	28
Washer Inside Diameter Tolerance (di tol.) - +0.25 / -0.0	+0.25 / 0.0
Washer Outside Diameter, Nominal (Do)	48
Washer Outside Diameter Tolerance (Do tol.) - +0.0 / -0.25	+0.0 / 0.25
Washer Thickness, Nominal (S3)	2
Washer Thickness Tolerance (S3 tol.) - +0.0 / -0.05	+0.0 / 0.05
Mounting Hole Dia. (dm)	4.000
Mounting Hole Pitch Dia. (dp)	38
Housing Counterbore Depth (Ha)	1.00
Housing Counterbore Depth Tolerance (Ha tol.) - +0.2 / -0.2	+0.2 / 0.2
Housing Counterbore Diameter, Nominal (HD)	48.000

ASTEPBW 2848-015 Bearing 2D drawings and 3D CAD models



## ISO BEARING-SINGAPORE (PTE)LTD.

Housing Counterbore Diameter Tolerance (HD tol.) - +0.12 / -0.0	+0.12 / 0.0
Material	Molded plastic with self lubricating resins.